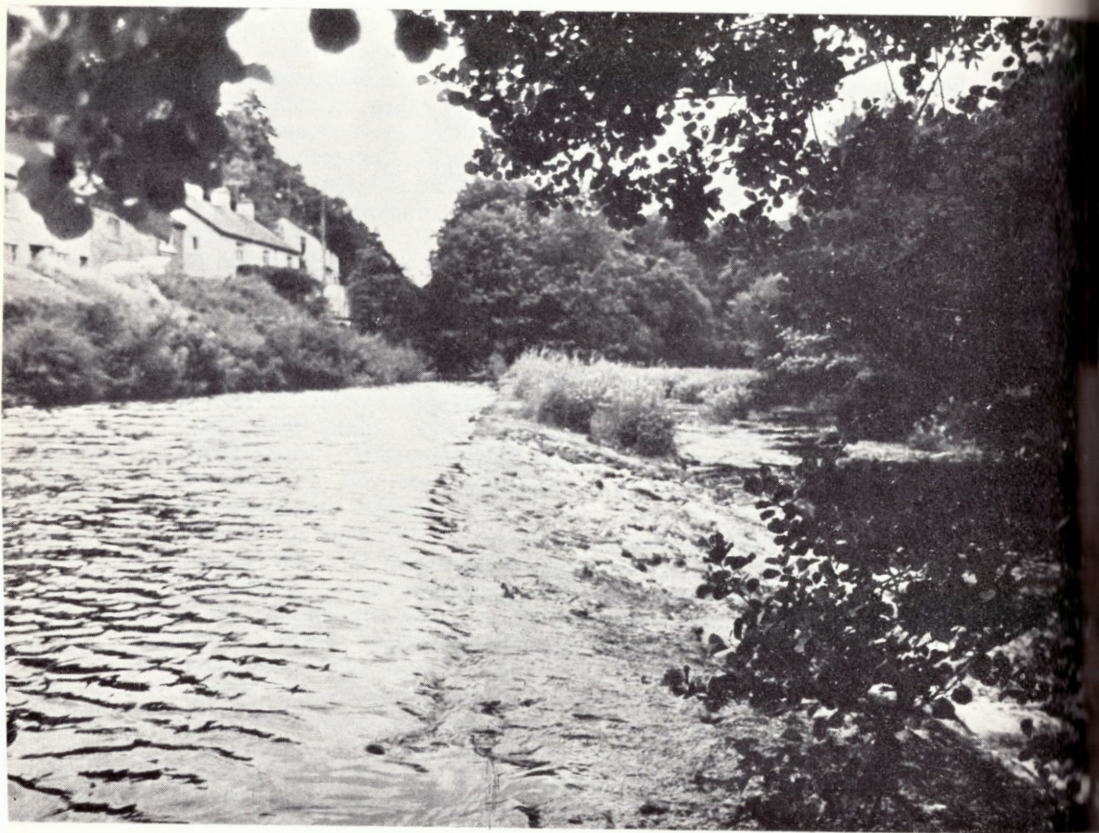


**THE DULVERTON LEAT** starts and ends in the River Barle. In its day it drove the wheels of at least four mills, and was the main source of industrial power in the town. These seven pages of pictures—all taken by **Vikki Leighton-Boyce**—tell the tale of man's ingenuity with water.



*Weirhead, Lady Street, looking downstream. The leat (on the left) is kept full by the weir (in the centre), which also allows the overspill to rejoin the river (on the right).*



*The first sluice gates along Lady Street.*

*Further along Lady Street, showing bridges to the houses. The river has turned away behind the buildings on the right. Note the old pump in the corner on the left.*





*Approaching the old Paper Mill in Lady Street, now called 'Bird Cage' (behind the cars). The leat path starts at the bridge and runs to the right.*



*The leat path, a permissive right-of-way. The old paper mill is on the left, with the leat flowing in between.*

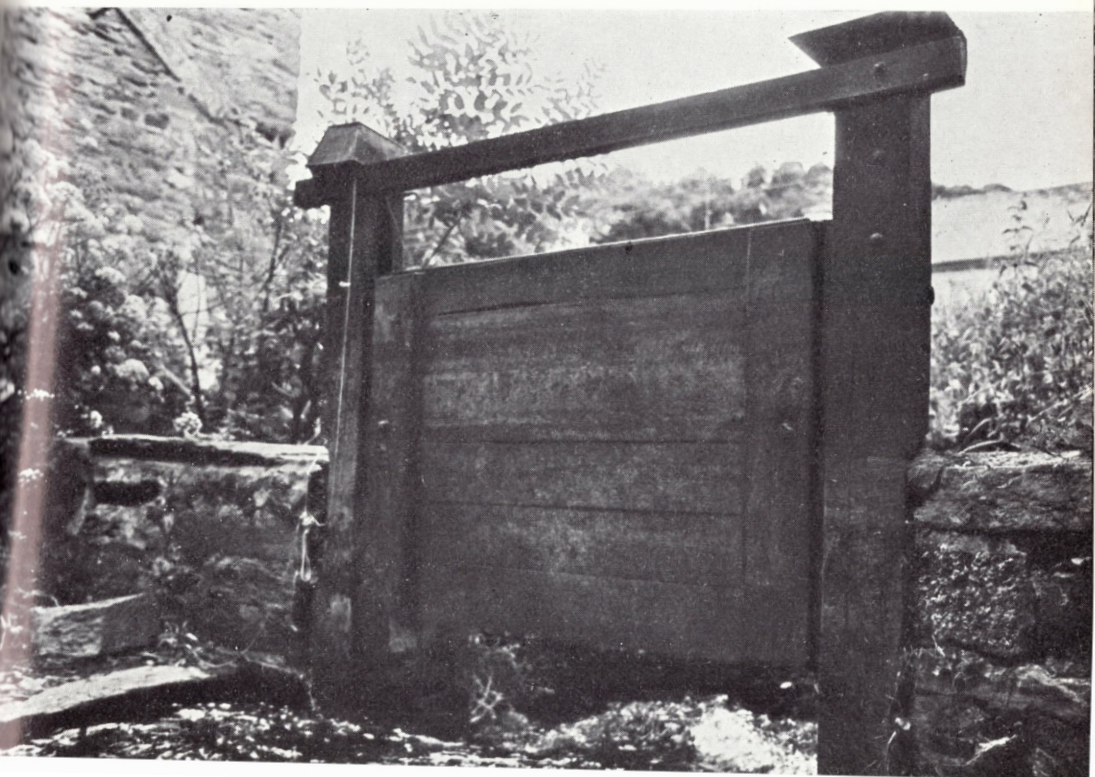






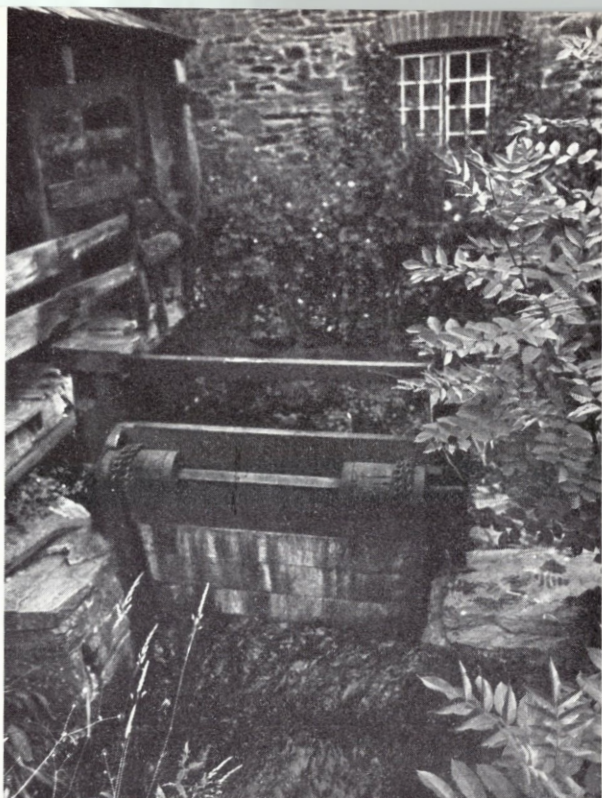
*The leat path.*

*When closed, this sluice gate directs the leat into the Town Mills. When open, the water flows round.*





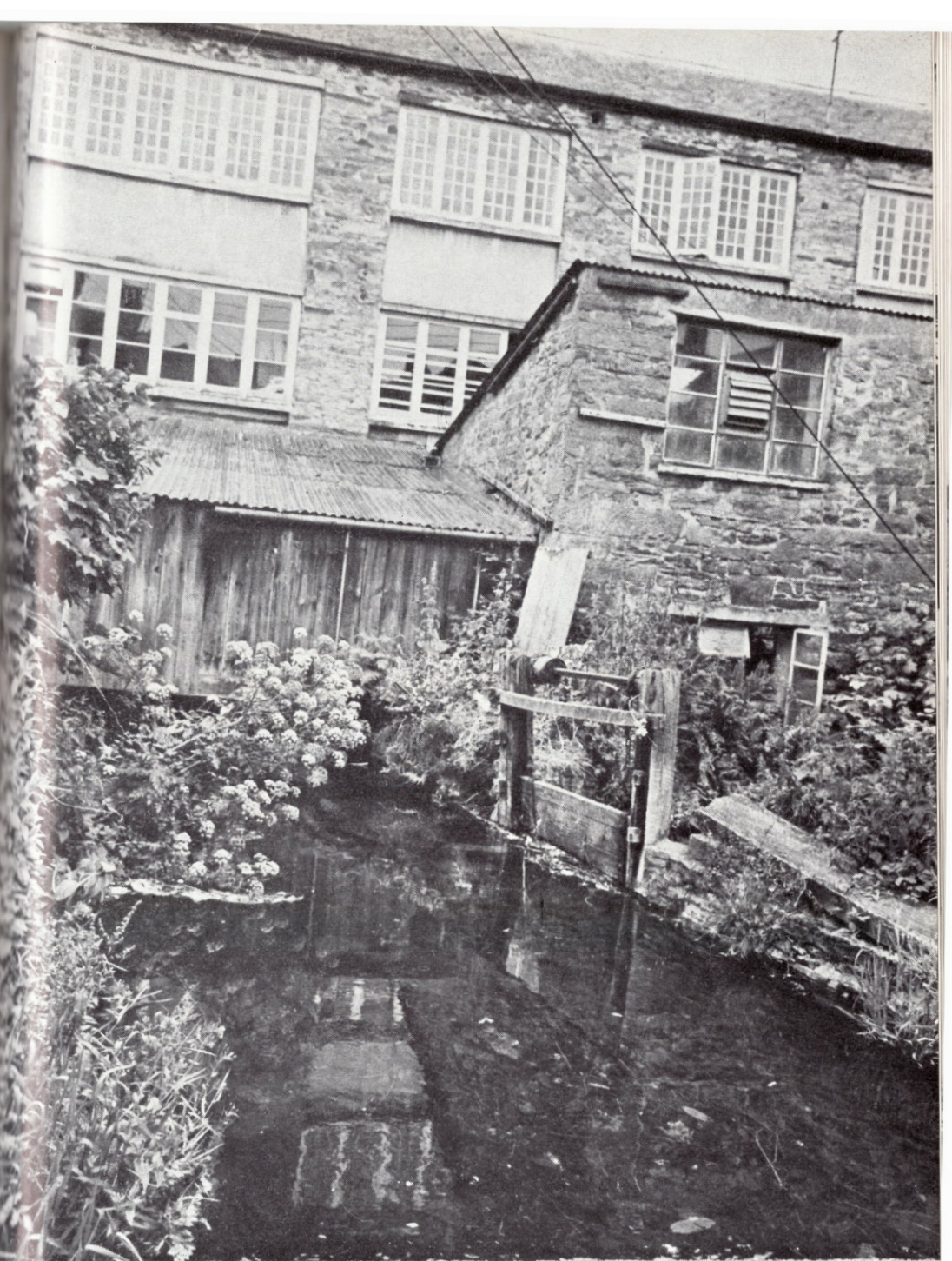
*The sluice gate at the  
Town Mills.*



*The Town Mills seen  
from the bridge over  
the leat in Dulverton  
High Street.*

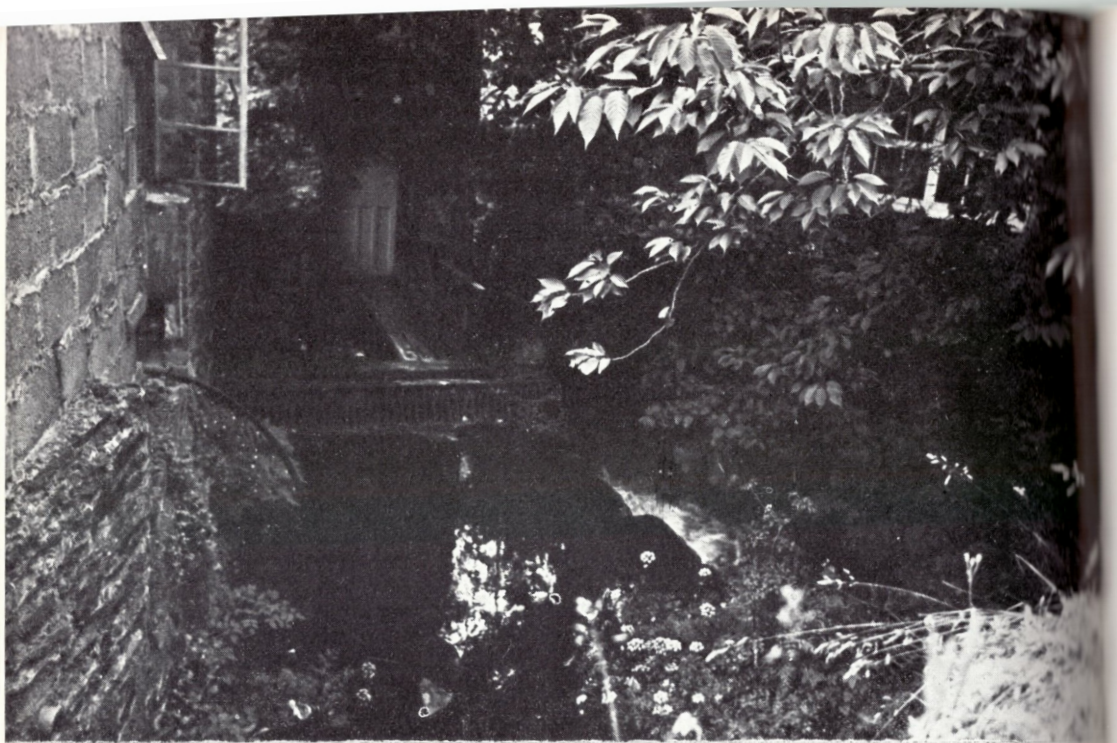
*See also p.58*





*The leat flowing under the Dulverton laundry building, formerly a crepe mill, and before that a woollen mill. The sluice gate controlled the flow.*





*Another mill stood below the laundry, now called Mill House.  
Where the leat rejoins the Barle. Dulverton Bridge in the background.*

